



# MONTHLY MEMBERSHIP PROGRESS REPORT

District 11 C2

Results as of: 12/31/2017

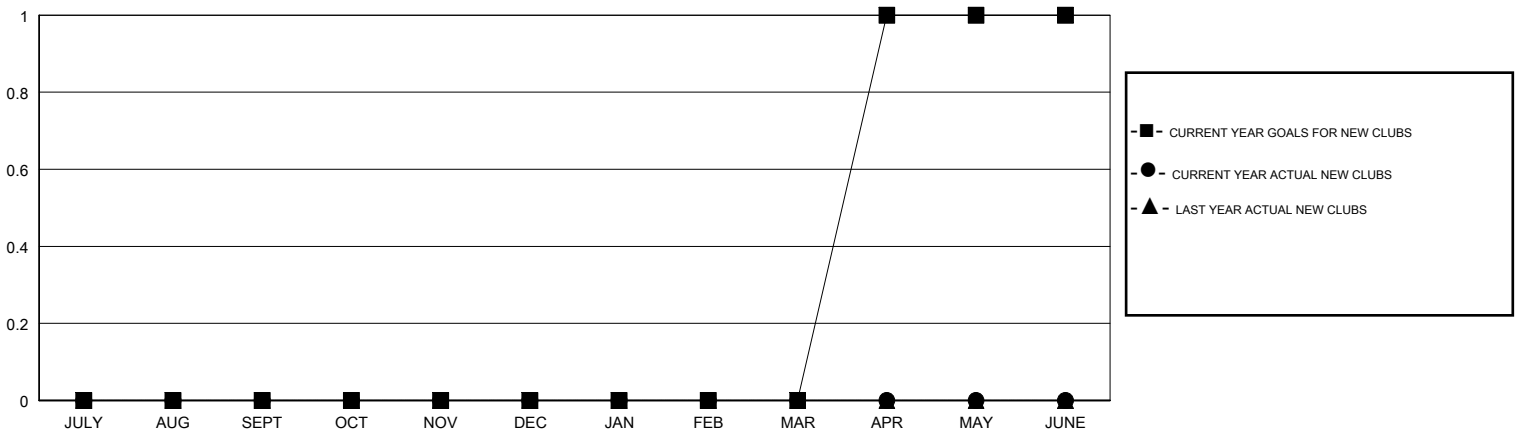
GMT: STEVE ANTON

LOCATION MICHIGAN

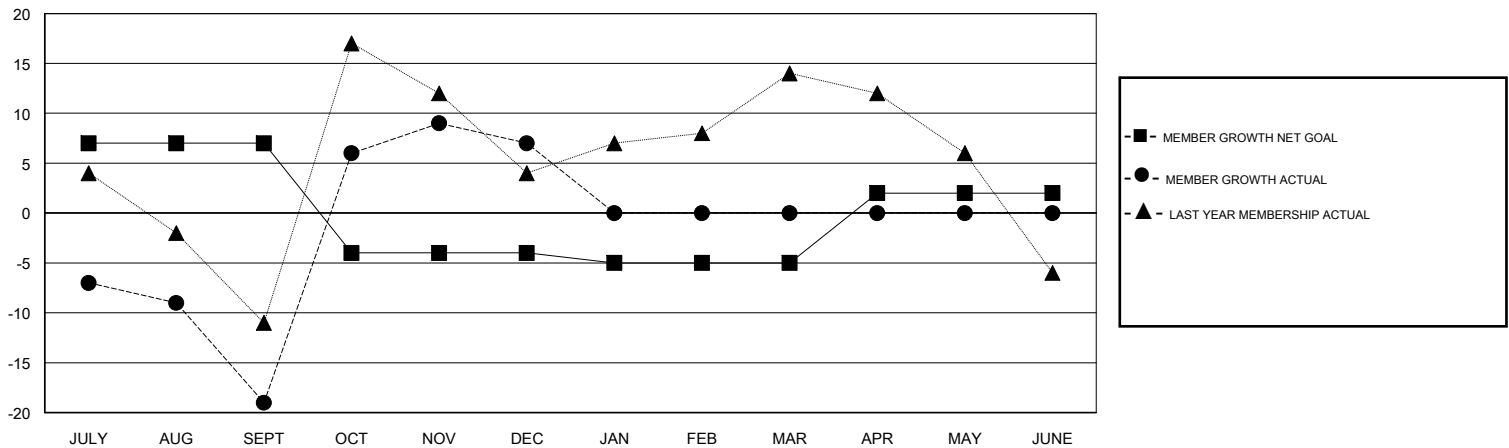
GMT CA

Clubs				Members			
RESULTS FOR 2017-2018				RESULTS FOR 2017-2018			
QUARTER	NEW CLUB GOAL	NEW CLUBS	DROPPED CLUBS	QUARTER	MEMBER GROWTH NET GOAL	MEMBER GROWTH ACTUAL	DROPPED MEMBERS ACTUAL (including transfers)
JULY/AUG/SEPT	0	0	0	JULY/AUG/SEPT	7	1	20
OCT/NOV/DEC	0	0	0	OCT/NOV/DEC	-11	59	31
JAN/FEB/MAR	0	0	0	JAN/FEB/MAR	-1	0	0
APR/MAY/JUNE	1	0	0	APR/MAY/JUNE	7	0	0

GOALS AND ACTUAL NEW CLUBS CUMULATIVE



GOALS AND ACTUAL MEMBERS CUMULATIVE



DROPPED CLUBS: 0	9 CLUBS OF 35 ADDED 1 OR MORE NEW MEMBERS	<b>GENDER DISTRIBUTION</b> MALE 619 (69.79%) FEMALE 268 (30.21%) Women Percentage Fiscal Year Goal: 30%
<b>DROPPED MEMBERS</b> DECEASED 8 CLUB CANCELLED 0 OTHER 43 TOTAL 51	<a href="#">CLICK HERE FOR CUMULATIVE MEMBERSHIP DATA</a>	TOTAL FAMILY UNIT MEMBERS 143 FAMILY MEMBERS PAYING HALF DUES 73